



# MANAGEMENT PROCESS: FROM IDEAS TO IMPLEMENTATION



## FEDERAL FISHERIES MANAGEMENT: A TWO-PART PROCESS



**1**  
COUNCIL PROCES

**2**  
NATIONAL MARINE FISHERIES (NMFS) RULEMAKING

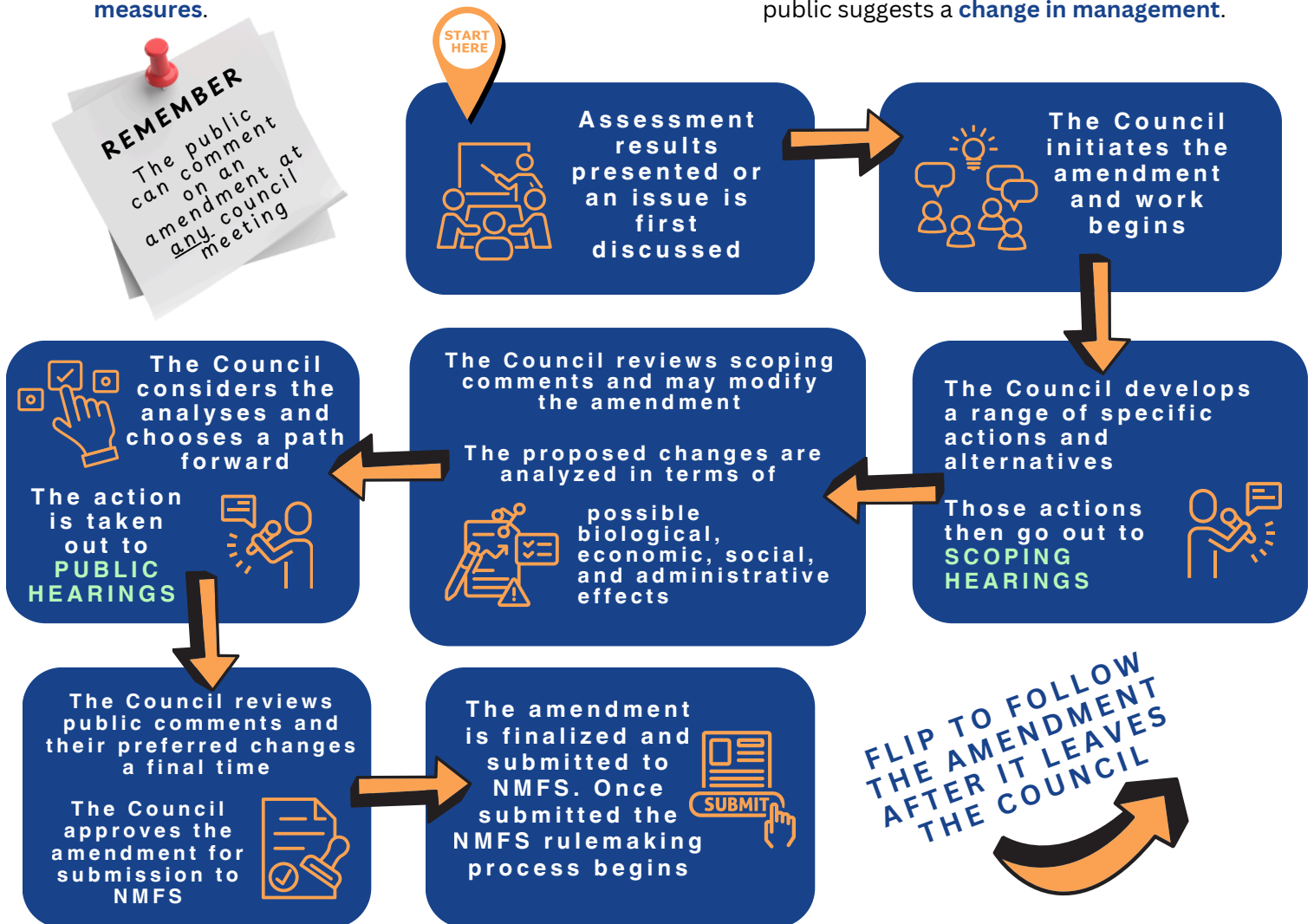


## THE COUNCIL PROCESS: FROM NEW INFO OR A FISHERY ISSUE TO COUNCIL DECISION

The Council initiates a change to a **Fishery Management Plan** via an **amendment** in response to:

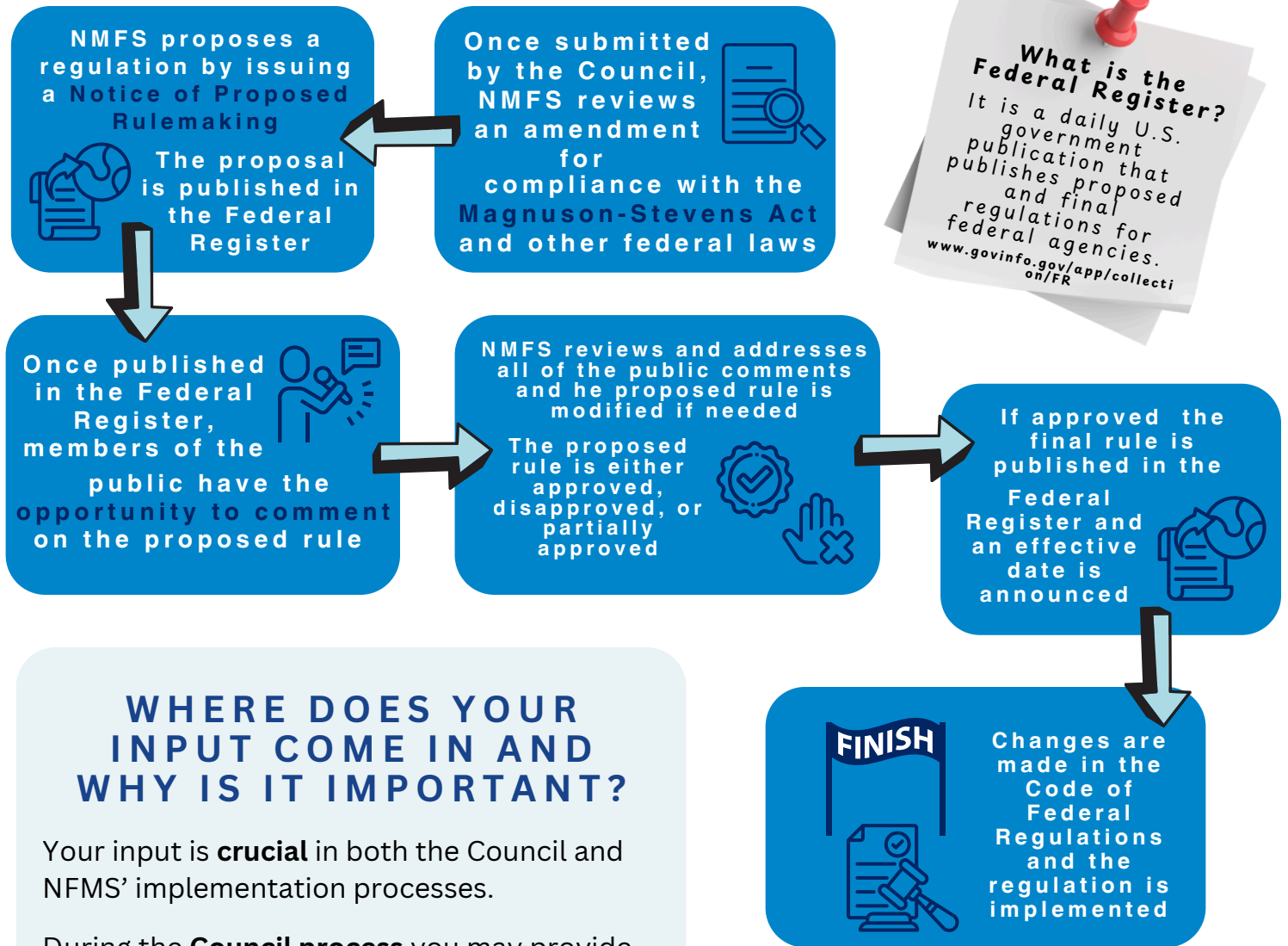
**A.** A new **stock assessment** prompts the Council to update **catch levels** and consider revising **sector allocations** and **management measures**.

**B.** A new **fishery issue** arises that needs addressing. For example, a Council member, Advisory Panel member, or someone from the public suggests a **change in management**.



# NMFS PROCESS: FROM COUNCIL DECISION TO IMPLEMENTATION

After an amendment is approved by the Council it goes through the following process at the National Marine Fisheries Service (NMFS)



## WHERE DOES YOUR INPUT COME IN AND WHY IS IT IMPORTANT?

Your input is **crucial** in both the Council and NMFS' implementation processes.

During the **Council process** you may provide comment during **scoping and public hearing sessions** as well as at any **Council or Advisory Panel meeting**. The Council relies on public feedback to make informed decisions about management changes. You can reach out to a Council member at any time to discuss management changes. All Council member information is listed on [safmc.net/about/council-members/](http://safmc.net/about/council-members/). If you have a question about making a comment, specific amendments, or regulations reach out to Council staff.

Providing comment during the NMFS rulemaking process helps the agency make the determination on the final rule. To find which proposed rules are currently open for comment visit

[www.fisheries.noaa.gov/rules-and-announcements/open-for-comment](http://www.fisheries.noaa.gov/rules-and-announcements/open-for-comment) and make sure to click on the "Open for Comment" tab.



## HAVE A QUESTION?

Find additional info at [safmc.net](http://safmc.net)  
or give us a call:  
**843-571-4366**